



ENCAUSTO
fiorentino



**Lo splendido
effetto “marmorino”**

Nasce dalla antica sinergia di particolari graniglie di marmo con il grassello di calce per ottenere un elegante ed originale effetto marmo puntinato e semi-opaco.



Wonderful “marmorino” Effect

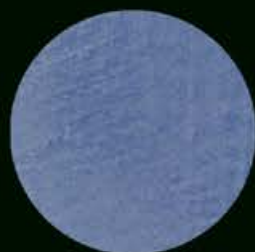
Resulting from the ancient synergy of particular marble chips with lime putty, for elegant and original marble-looking opaque and semi - opaque effects.

Великолепный эффект “marmorino”

Результат древней синергии особой мраморной крошки и мраморной пыли для создания элегантных и оригинальных матовых и полуматовых эффектов.



Art. 511 B



Art. 512 B



Art. 513 B



Art. 514 B



Art. 515 B



Art. 516 B



Art. 517 B



Art. 518 B



Art. 519 B



Art. 520 B



Art. 521 B



Art. 522 B



Art. 523 B



Art. 524 B



Art. 525 B



Art. 526 B



Art. 527 B



Art. 528 B
SPIVER CHANNEL



Art. 529 B



Art. 530 B



ARTHE ACADEMY